

## Project Data Sheet

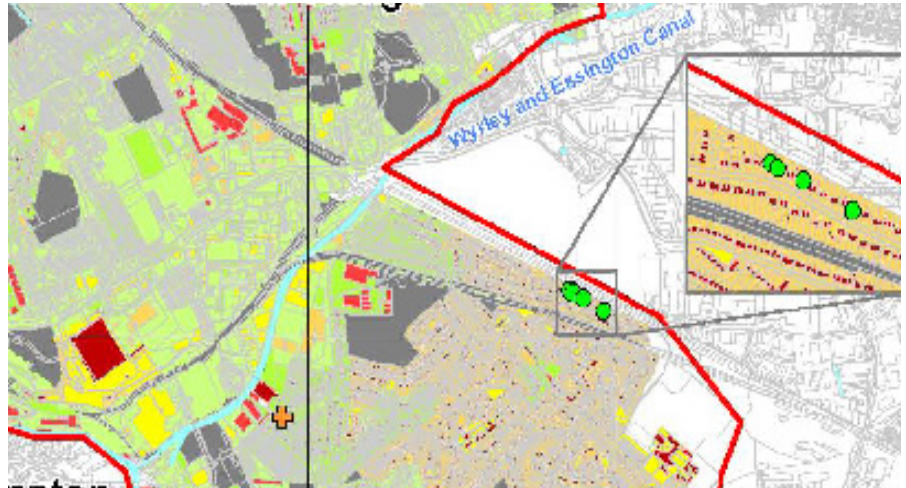
### PROJECT

**Stroud Sewerage  
Management Plan**

### CLIENT



- Sewerage
- Rivers
- Coastal
- SUDS
- Land Drainage
- Hydraulic Modelling
- Flood Risk Assessments
- Drainage Area Planning
- Asset Management
- Flood Alleviation
- Flooding Investigations
- Feasibility Study
- Drainage Design
- Environmental Aspects
- Inundation Modelling
- Surface Water Management



**Richard Allitt Associates Ltd have been commissioned by Severn Trent Water to undertake and maintain the Sewerage Management Plan (SMP) for Stroud during AMP5 (2010-2015).**

The Sewerage Management Plan for Stroud replaces the previous DAP undertaken in AMP3 and builds on data from within it, with more focus on risk and managing the risk to Severn Trent Water.

Sewerage Management Plans are undertaken for areas where there is a high risk to Severn Trent Water, this could be due to a high number of internal flooding locations, large planned growth in the area, pollution issues, model confidence and age or the impact of 3rd parties schemes and projects such as Surface Water Management Plans.

The SMP for Stroud commenced in 2010 and the main areas of risk identified so far are related to the impact of future development in the area, capacity issues with the trunk sewer and the age of the current hydraulic model. The aim of the SMP is to develop strategies for Stroud which Severn Trent Water can adopt both in the short term and in the longer term to deliver a cost effective, sustainable service to their customers in the area.

As the SMP is not only focused on the short term, RAA will be maintaining the SMP for the duration of AMP5, this may include regular updates to the model with capital schemes and new developments as part of ongoing model maintenance or it may include liaising with external stakeholders on Severn Trent Water's behalf to help with surface water management plans, integrated urban drainage projects, EA flood defence projects, etc.

Richard Allitt Associates Ltd  
Suite 3, The Forge Offices,  
Cuckfield Road,  
Staplefield, Haywards Heath,  
West Sussex, RH17 6ET

Tel: 01444 401840  
Fax: 01444 401940

[www.raaltd.co.uk](http://www.raaltd.co.uk)